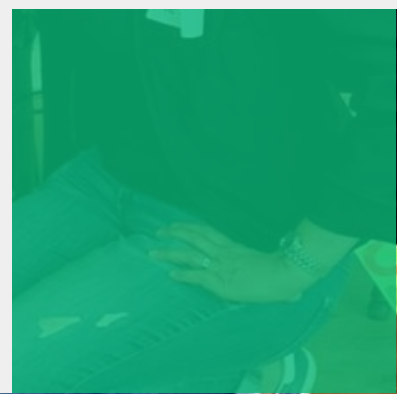
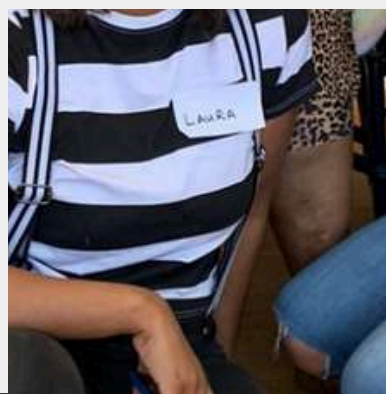
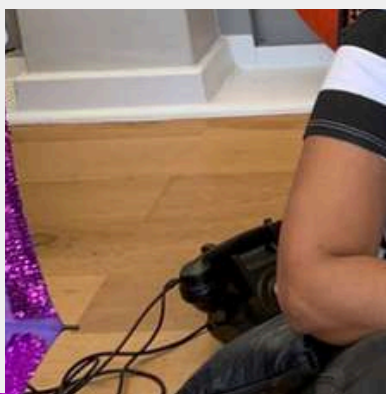
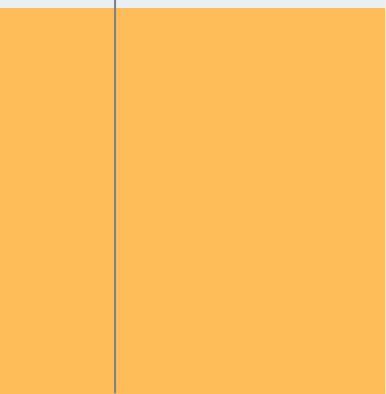
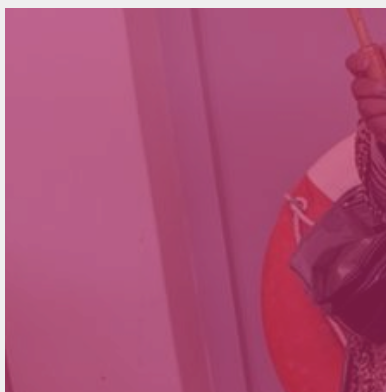
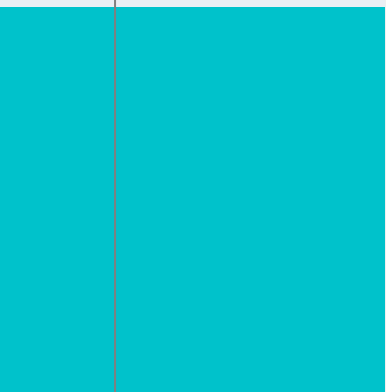


Annual Report FY2024

outliers
supporting after-school programs



Chairperson's report

Against a backdrop of unequal access to quality education, children in South Africa are at high-risk of school drop-out, particularly those attending schools in poor communities. Without any opportunity to catch up, these learners do not access tertiary education and face high levels of unemployment.

Children who access a safe space in their communities after school, where they are cared for and supported with academic resources, stay in school and progress to the next grade. With your support, Outliers has partnered with these programs to ensure that they have the training and resources needed to continue to be a place of hope for each learner.

We are grateful to you, our donors and collaborators, for committing to our shared vision to see every child access quality academic support. Together with your support, we have changed the story for thousands of learners.

With much gratitude

Team Outliers

Vulisango Mtshikwana
Heidi Segal
Toni-Lee Williams
Laura Singh



Increasing access to quality education in after-school programs



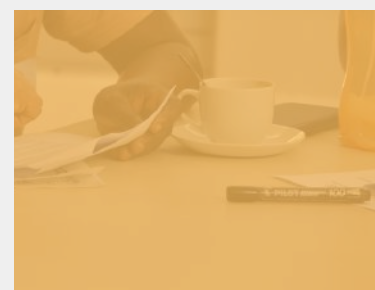
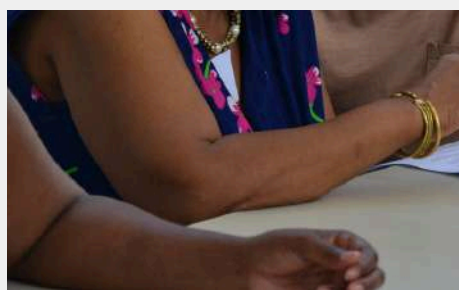
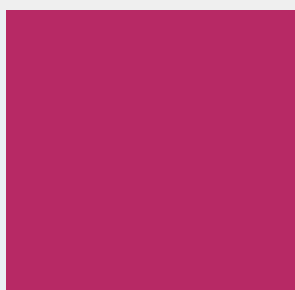
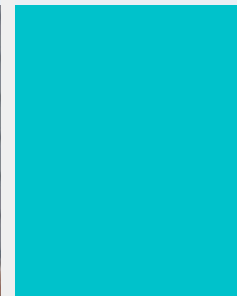
Tutors in community-based programs are committed to giving learners the best chance of success by providing safe spaces for them to do their homework after school. We develop training materials and tools and procure academic resources to equip these tutors to increase access to quality education.

Tutors are encouraged to develop a learner-led approach to tutoring that centres around the learner, and to develop skills to connect meaningfully with them. In this way, tutors are better able to assist learners at their own pace, using tools and learning styles best suited to each individual learner.

"I looking forward to learning more about my students."

Sidney Botha, Sakhubuntu, Nyanga

Building on these tutoring skills, we accelerated catch-up by extending the capacity of tutors to provide curriculum recovery in their after-school programs. This included deepening their understanding of curriculum design from grade to grade and providing Outliers tools that aid assessment and testing of key learning outcomes across grades.





To ensure that these programs are sustained and continue providing curriculum recovery, we prioritized organizational capacity development for participating programs. Following a full governance audit, each program was assisted with fiscal compliance documentation, policy development and donor relations. By increasing the good governance and sustainability of each organization, your investment in training and resourcing of tutors in 2023 will continue to benefit learners every day after school for years to come.

Sustainability Checklist

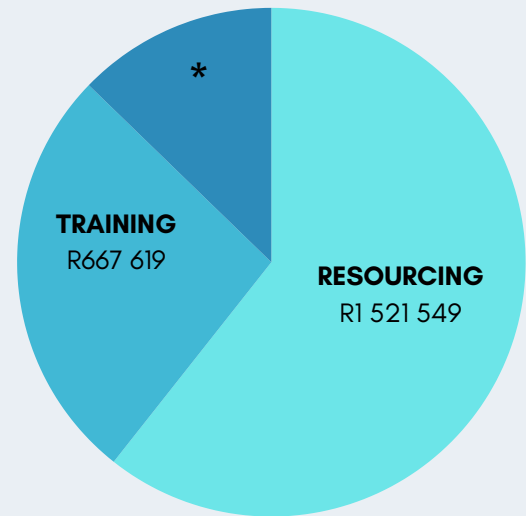
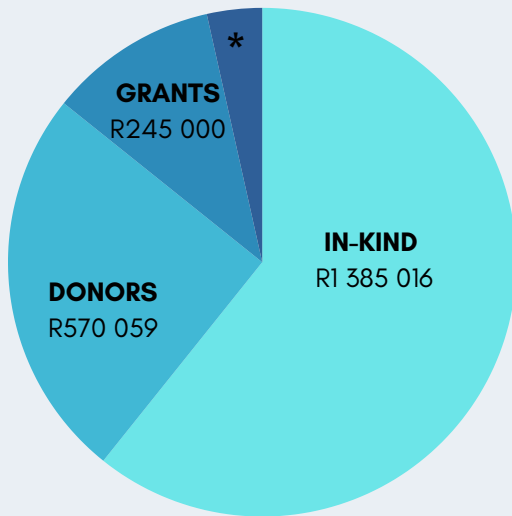
- Registered NPO
- Board policy
- Child protection policy
- Personnel policy
- Finance policy
- Annual report
- Letter of enquiry
- Grant proposal
- Social media guidelines
- Team wellbeing strategy

Impact in numbers



Financial information

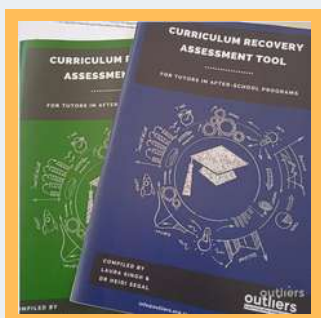
Your individual financial donations continue to be our main source of income (63%), enabling us to do the critical work of Outliers. We are grateful for grants from The DG Murray Trust, The Kolisi Foundation and Rotary Germany, which accounted for 27% of our income.



TOTAL INCOME R2 279 996
 * Other R79 920

TOTAL EXPENDITURE R2 508 998
 * Operations R319 805

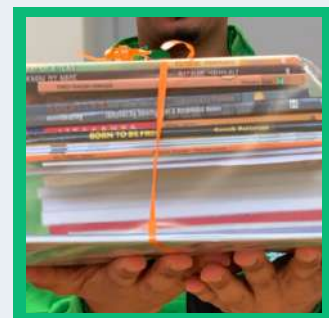
Our financial priorities are reflected in our expenditure with allocation of funds to training tutors (27%) and to resourcing programs (60%). This is required, as lack of access to academic resources limits programmatic responses in many after-school programs. With your support, including in-kind donations of close to R1.5 million, we were able to provide programs with workbooks, stationery, and library books for learners, at no cost to the beneficiaries.



Workbooks
R804040



Stationery
R49800



Books
R229345

ADDRESS

44 Weltevreden Ave
Rondebosch
7700
Cape Town

EMAIL

info@outliers.org.za

TELEPHONE

0837005987

BANKING DETAILS

ABSA Savings Account
9295941038
Claremont 632005
Swift Code ABSAZAJJ

REGISTRATION

NPO 136-746
PBO 930052553

AUDITORS

Mr Wernel Nel
Questus Incorporated
11 Retief Street
Potchefstroom 2531
Practice Number
903924
admin@questus.co.za
0182975457

SOCIAL MEDIA

WEBSITE outliers.org.za | FACEBOOK OutliersEduLab | INSTAGRAM OutliersEduLab



On behalf of all the programs, tutors, and learners who access quality education in after-school programs...

THANK YOU!